



**ESB General Assembly
1st September 2014
Liverpool, UK**

Agenda



- President's welcome address (MS)
- President's Report (MS)
- Legal address and Secal service (MD)
- Innovation initiative (MD)
- Documentation (MB)
- New ESB Website (PG)
- Membership (PD)
- Treasurer Report (PD)
- Auditors' Report
- Affiliated societies (LdS / MS)
- Future ESB meetings (AP)
- YSF (PH)
- New bursary/sponsorship for lab exchange (JA)
- Journal of Materials Science: Materials in Medicine (JA)
- A.O.B



President's report

Matteo Santin



**ESB SWOT ANALYSIS:
Towards a Participated, Influent Society**

**General Assembly
1st September 2014
Liverpool, UK**

Matteo Santin

SWOT Analysis



STRENGTHS

- Almost 40 Years of History/Character of the Membership
- Added value to R&D
 - Networking
 - Publishing (JMS:MM)

WEAKNESSES

- One-Event-A-Year Society
- Late Responses/Outdated IT
- Links with policy makers/clinicians/Industry
- Relatively low impact factor (increase 2008-2014=1.5 to 2.379)

OPPORTUNITIES

- Restructuring/Modernisation
 - New Website
 - New publishing strategies
- Regular Newsletters/Twitter
- ESB Member Lounge
- Provider of Expertise

THREATS

- Redundant/Superseded by Sister Societies
- No real influence on R&D

SWOT Analysis Objective



- Modernisation of the ESB
 - A flexible and professional structure
 - An enabler of R&D and Education
 - A base-owned environment

ESB Strategic Plan



- Communication
 - Personalised contacts
 - IT tools
 - Participation of our members to activities
- Innovation
 - Adoption of a divergent thinking to find new routes for translation during our annual conferences and beyond
- Education
 - fostering of a new generation of professionals, capable of offering their interdisciplinary profile to higher education and research organisations, to industry and to other stakeholders



Innovation initiative

Michael Doser

Innovation initiative



Integration of Industry

- Questionnaire sent to 113 companies in 2010
- 18 Questionnaires received (I, D, NL, CH, UK, USA)
- Results:
 - Membership important
 - ESB should have higher visibility by internet
 - Important benefits: worldwide network, journal access
less important: awards, reduced rates
 - ESB should focus more on industrial products development
 - Relevant skills: T.E., stem cells, drug delivery, nanotechnology
 - Conference is contact platform
 - Companies like to organize workshops and participate in exhibition
 - More applied and clinical results to be discussed → **Translation**
 - Influence on regulatory bodies.



Innovation initiative

Translation

- Request from Industry (questionnaire)
- Proposal by Yves Bayon at the Dublin Meeting 2011:
 - Annual Academic – Industrial – Symposium
 - Exchange of new ideas, generation of partnerships
 - Share experience of bringing new biomat technologies to clinic
 - Bringing together people from industry and academia as well as regulatory officers, attorneys, health care authorities surgeons etc.
 - Round table for Q&A
- Translational award, initiated by the Swiss Society
- Symposium this year at the Liverpool conference of ESB



Legal address and Secal service

Michael Doser

Legal address



History of the Registration

- ESB founded March 12th, 1976 in Bologna, Italy
- July 1st, 1978: Registration moves from Bologna to Illkirch, France
- May 25th, 1984: Registration moves to Strasbourg (Tribunal d'Instance)
- Proof of authenticity of Society necessary after bank crisis 2009/10
- Decision of the Council 2009 for a permanent registration in Strasbourg

Legal address



Address

- Originally: 23, Bd. de l'Orangerie, Strasbourg
- New address: Letter and phone service
Decision of Council 29th November 2010:
Domiciliation at ATHENA
Mail will be sent to Secretary
- City of Strasbourg changed the street name
2013:

CENTRE D'AFFAIRES ATHENA

2 rue Henri Bergson

67200 STRASBOURG



Legal address & Registration



TRIBUNAL D'INSTANCE DE STRASBOURG

CS 60444

45 rue du Fossé des Treize
67008 STRASBOURG

TÉL : 0388155929 FAX: 0388759129

REGISTRE DES ASSOCIATIONS DE STRASBOURG

EXTRAIT

VOLUME 46 FOLIO 94

Dénomination : **SOCIETE EUROPEENNE POUR LES BIOMATERIAUX (EUROPEAN SOCIETY FOR BIOMATERIALS)**

Siège : **Centre d'Affaires ATHENA 2 rue Henri Bergson 67200 STRASBOURG**

L'association a été inscrite le 25/05/1984. Les statuts d'origine datent du 23/06/1978.

- Par décision de l'assemblée générale du 11 Septembre 2013 de nouveaux statuts ont été adoptés.
INSCRIT LE 18 Juillet 2014 .

- Par décision de l'assemblée générale du 11 Septembre 2013 , le nouveau comité se compose notamment de :
Président : Monsieur Matteo SANTIN demeurant University of Brighton Huxley Building Lewes Road à 0
BRIGHTON BN2 4GJ
Trésorier : Monsieur Pedro GRANJA demeurant Universidade de Porto Rua do Campo Alegre 823 à 0 4150-180
PORTO PORTUGAL
Secrétaire : Monsieur Marc BOHNER demeurant RMS Foundation Bischmattstrasse 12 à 0 CH-2544 BETTLACH

INSCRIT LE 18 Juillet 2014

STRASBOURG, le 01/08/2014
POUR EXTRAIT CONFORME



Le Greffier
Fabienne VETTER

Secal service



- October 1st, 2012: Council Meeting at ATHENA
- Discussion of a permanent Secretariat at ATHENA
- Proposal to do this with SECAL in the same building
- SECAL: La Société d'Etudes Comptables d'Alsace et de Lorraine, founded 1963
- Financial management and accounting, legal advice etc
- **Proposed Tasks**
 - Assistance for bank account opening and bank services (credit card payment e.g. PayPal etc).
 - Management of the ESB bank account and books
 - Establishment of the financial statements
 - Membership secretariat

Legal and Service Issues



Overview

- 2009: problems arise to prove legal status of ESB
- Nov. 2010: legal status approved, new address in Strasbourg
- Oct. 2012: discussion on permanent secretariat and bank account in Strasbourg
- July 2014: actualisation of legal status
- Oct. 14th, 2014: opening of new bank account, establishment of secretariat.
- Jan. 2015 closure of old bank account in Porto



Documentation

Marc Bohner



- Secal/Athena
 - Will act as «mailbox» for ESB
 - Will centralize all ESB documents
 - Will forward all documents to ESB Secretary
- Digital archive
 - Make PDF copies of past documents to build an electronic archive of the ESB
 - Post relevant documents on the new ESB website (e.g. minutes of past GA's)
- New ESB council elections (3 members) in 2015
 - Dec 2014: call for nominations
 - Feb 28, 2015: deadline for nominations
 - Online voting
 - Results announced during GA at ESB2015



New ESB Website

Pedro Granja



New ESB website under development

- New website available by the end of 2014
 - New graphics
 - Better communication tools
 - More intuitive navigation
 - Integration with social networking
 - Many new functionalities



The European Society for Biomaterials

New Homepage

ESB EUROPEAN SOCIETY FOR BIOMATERIALS

[ABOUT ESB](#) [AWARDS](#) [EVENTS](#) [PUBLICATIONS](#) [MEMBERSHIP](#) [YSF](#) [MEMBERS](#) ▾





The European Society for Biomaterials

Editorial content

WELCOME TO THE EUROPEAN SOCIETY FOR BIOMATERIALS

A YEAR-LONG 'VIRTUAL ENVIRONMENT' WHERE SCIENTISTS, CLINICIANS, INDUSTRIALISTS, AND REGULATORY AFFAIR EXPERTS CAN NETWORK.

The European Society for Biomaterials is a non-profit organization at the forefront of the scientific community determined to tackle unmet clinical needs by means of advanced materials for medical devices and regenerative medicine.

We provide a year-long "virtual environment" where scientists, clinicians, industrials and regulatory affair experts can network to maximise R&D and commercial opportunities to the benefit of patients. Our interactive website favours social networking and is a show case for the "innovation" created by our members.

Tweets


 Follow



#ESB_President @ESBPresident

27 Aug

#a new update version of the exciting ESB 2014 conference programme is now available to delegates; 4 days to go!!


 Expand



#ESB_President @ESBPresident

23 Aug

#ESB2014 programme now available at ESB2014.org with 8 days to go to its start


 Brighton, Brighton and Hove, United Kingdom



#ESB_President @ESBPresident

30 Jul

#impact factor of J Mater Sci Mater Med up from 2.141 to 2.379. Good news for the whole ESB community!

 Brighton, Brighton and Hove, United Kingdom

Tweet to @ESBPresident



News and events

EVENTS

> ESB 2014 - 26th European Conference on Biomaterials

📍 Liverpool, UK 📅 8/31/2014

> Bioceramics 26

📍 Barcelona, ES 📅 11/6/2014

> ESB2015 - 27th European Conference on Biomaterials

📍 Krakow, PO 📅 9/6/2015

> World Biomaterials Congress 2016

📍 Montreal, CA 📅 5/18/2016

NEWS

> J Mater Sci Mater Med 2014 Initiatives

📅 6/4/2014

> Honorary Membership to Prof Missirlis

📅 5/5/2014

> The 2014 George Winter ESB awardee is Professor Guy Daculsi (France)

📅 4/7/2014

> The 2014 Jean Leray ESB awardee is Dr. Lorenzo Moroni (The Netherlands)

📅 4/7/2014

> ESB2014 Abstract Deadline extended

📅 4/7/2014





About the ESB



ORGANIZATION

The ESB Council is constantly at work for you to ensure the highest-standard organisation of events and activities to the benefit of its members and their research and innovation.

[Our History](#)

[Council Details](#)

[Liaison](#)

[Minutes](#)

[Elections](#)



[Our History](#)

[Our History](#) The European Society for Biomaterials (ESB) was founded in March 1976, and became a member of the International Union of Societies for Biomaterials Sciences and Engineering (IUS-BSE) at its conception, in 1979. The ESB today has approximately 750 members from 33 different countries worldwide. History of the



Membership



MEMBERSHIP

Join ESB Network !

Membership

Pricing

Free



Membership

Member Benefits

The European Society for Biomaterials (ESB) is a leading scientific association, which aims to encourage research and information dissemination in the field of Biomaterials.

ESB members gain the following benefits:

- **Networking Facilities** at the password-protected, member-only, area of ESB's website, to allow ESB members to find other members and share information through the Members Directory.
- **Worldwide networking** since the ESB is a founding member of the [The International Union of Societies for Biomaterials Sciences and Engineering \(IUS-BSE\)](#), which brings together the major international biomaterials societies and organizes the World Biomaterials Congress once every 4 years.
- **Access** to the content of the official ESB journal at [Springer.com - Journal of Materials Science: Materials in Medicine](#).
- **Reduced Rates** at all IUS-BSE conferences including at the ESB Annual Conference, the Society for Biomaterials (USA) Annual Conference and the World Congress.
- Professional recognition through the prestigious ESB Awards and [FBSE](#) status recognition (through IUS-BSE).



Members access



How to join

Hi, want to be part of us?

you are just 2 minutes far become an ESB member!

REGISTER

Our brochure

If you want to learn more about benefits of being an ESB subscribed member, you can download our commercial brochure by clicking on the slide below.

Member access

Already a member?

Access your profile and ESB network simply by logging in

LOG IN

President
 Marcus Sartin
 Professorial Studies in Translational and Adult Regeneration
 School of Pharmacy & Biomolecular Sciences
 University of Brighton
 UNITED KINGDOM
 Tel: +44 1273 647082
 Email: president@esbiomaterials.eu

Vice-President and Industrial Liaison
 Richard Dean
 Institute for Tissue and Process Engineering
 Department of Biomedical Engineering
 UNIVERSITY
 Tel: +44 11 7596222
 Email: richard.dean@u-birmingham.ac.uk

Treasurer
 Peter Elliott
 100 Centre, University Gardens
 BIRMINGHAM
 Tel: +44 121 2754494
 Email: treasurer@esbiomaterials.eu

Secretary
 Marc Balfanz
 100 Centre, University Gardens
 BIRMINGHAM
 Tel: +44 121 2754494
 Email: secretary@esbiomaterials.eu

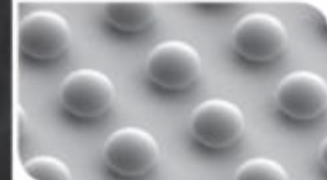
Other Council Members
 Julia Bonfield (Birmingham, BIRMINGHAM, UNITED KINGDOM), Frank Bruggemann (Bielefeld, University of Bielefeld, BISMARCK), Lucy Sh Walsh (King's College London, Dental Institute, Guy's Campus, London, UNITED KINGDOM), Peter Gnanou (Biomaterials Division INER - Institute de Recherche Biomédicale, Université de Paris, Paris, FRANCE), Pamela MacLellan (University of Toronto, WBA Institute for Biomedical Technology and Technical Medicine, Department of Tissue Regeneration, Toronto, THE NETHERLANDS), Adriaan Pasterkamp (Network of Excellence for Functional Biomaterials, National University of Ireland Galway, IRELAND)

Investigative Panel President
 Luigi Ambrosio (Institute of Orthopedics & Biomedical Materials, National Research Council, Naples, ITALY)

www.esbiomaterials.eu



EUROPEAN SOCIETY FOR BIOMATERIALS





Members area

- Several improvements in members area:
 - Member profile, including expertise
 - Possibility to advertise and look for technologies
 - Provide head lab member easier management of lab members
 - Automatic invoicing
 - Implementation of credit card and Paypal payments

ACCOUNT

Manage your personal information and profile.

 My Picture

 My Information

 Subscription

 My Profile

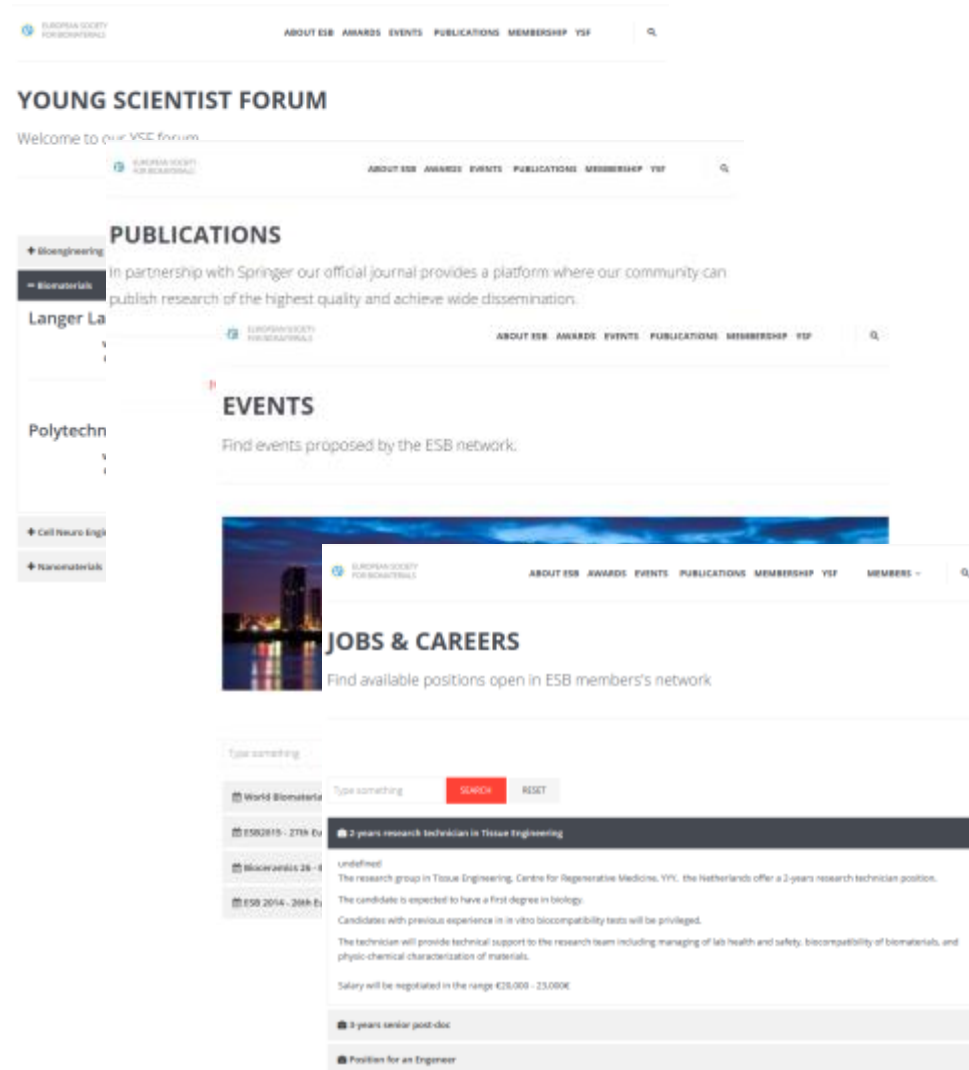
 Council vote

 Technology & Innovation advertisement



Other improvements

- Improvements in “Young Scientists Forum” part of the website
- Several improvements in back office (Treasurer tools for accounting and member management)
- Implementation of electronic voting system





Membership

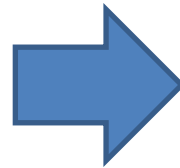
Peter Dubrueel



Membership Fees

- Fee reduction for various membership levels as of 2014

Membership Type	Fee €	
Individual	144	
Junior	26	
Senior	62	
Lab	253	
Corporate	333	



Membership Type	Fee €	
Individual	130	
Junior	25	
Senior	50	
Lab	230	
Corporate	300	

- Invoice templates have been posted on a Dropbox account:

deadline for submission to treasurer@esbiomaterials.eu is on September 30th 2014, after which finalised invoices and/or proofs of payment will be sent



Treasurer's report

Peter Dubrueel



Balance 2013

out (€)		in (€)	
4,167.97	secretariat	20,001.72	fees
316.52	bank commissions	1,789.00	efort
7,500.00	sponsorships 2011-2013		
15,600.00	springer 2011-2012		
6,781.10	esb 2013 awardees		
1,870.00	esb-china 2013		
110.00	ESB 2013 Conference		
36,345.59		21,790.72	
	Asset (31/12/2012)	59,088.78	
	Asset (31/12/2013)	44,533.91	



Balance 2014 (Provisional)

out (€)		in (€)	
704.26	secretariat	7,533.00	fees
179.01	bank commissions	0.00	efort
900.38	esb 2013 student awards		
1,052.15	ysf 2013		
321.38	esb 2013 awards		
153.30	esb 2013 conference		
69.09	domain renewal		
3,379.57		7,533.00	
	Asset (31/12/2013)	44,533.91	
	Asset (present)	48,687.34	



Auditor's report

Rachel Williams, Silvia Faré



Affiliated societies

Lucy di Silvio / Matteo Santin



Future ESB meetings

Abhay Pandit

Conferences



- New proposal mechanism for future sites
- Invitation for bids will be communicated to all members and to National Societies
- Formal bid to be lodged in a prescribed format
- Bid chosen based on the bid and short interview
- Bids for 2019 – opening now
- Guidelines for conference hosting – ongoing

Upcoming Conferences



27th European Conference on Biomaterials

Krakow

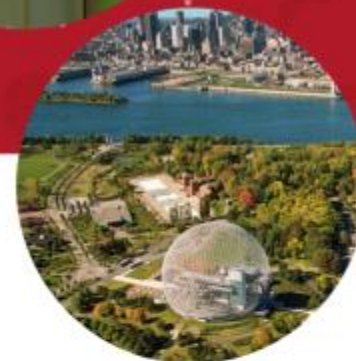
2015

2016

you will be here



Montréal, Canada



WBC2016

10th World Biomaterials Congress
May 17-22, 2016 | Montréal, Canada

WBC2016.org

Future ESB Conferences

2017:

Athens



2018:

Maastricht



2019:

Bidding process is open.

Deadline: Feb 28, 2015



ESB – YSF activities

Pamela Habibovic

ESB – YSF activities



Annual financial support: €3k

YSF representatives:

- Dr. Sandra van Vlierberghe (spokesperson)
- Dr. Izabela Stancu (secretary)
- Dr. Lorenzo Moroni (YSF industry liaison officer)
- Dr. Giuseppe Cama (YSF educational officer)
- Dr. Anna Finne Wistrand (National chapters liaison officer)

ESB – YSF activities



- *Communication:*
 - YSF microsite and use of social media (LinkedIn, Facebook, Twitter).
 - ESB lounge.
 - Maintaining the existing and establishing new contacts with (potential) members.
- *Education:*
 - Mentor-mentee program.
 - New travel / lab exchange award for young scientists.
 - Reviewer program for JMSMiM.
- *Innovation:*
 - Intensifying contacts with industry.
 - Intensifying contacts with young scientists organisations outside Europe.

AMBA 2014

ADVANCED MATERIALS FOR BIOMEDICAL APPLICATIONS

Oude Vismijn, Ghent, Belgium
NOVEMBER 18th-21st 2014

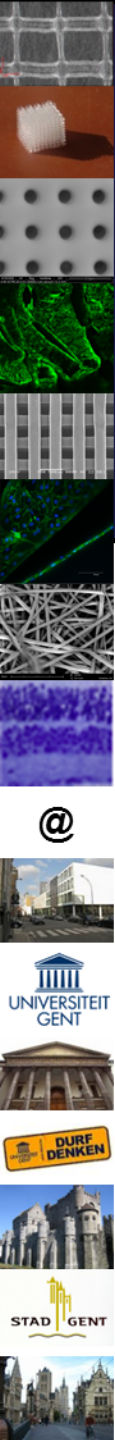
WELCOME @ AMBA 2014

&

SECOND
ANNOUNCEMENT

WELCOME to GHENT

*The conference will be preceded by a winter school (November 17th & 18th)
on polymers for biomedical applications organized by the ESB-YSF.*



THE EUROPEAN SOCIETY
FOR BIOMATERIALS

young.scientistsforum



New bursary / sponsorship for lab exchange

Joëlle Amédée-Vilamitjana

Sponsorship for lab exchange: Racquel Z. LeGeros Award



Proposal: Allow graduate students to pursue their research in International or European academic laboratories or companies dedicated to biomaterials and regenerative medicine with the aim to increase their knowledge in a specific topic and /or a technology.

Who can benefit?: ESB member graduate and ESB member students from European universities are eligible to apply to this call.

For how long can students go abroad?: 3 months.

Two projects will be supported each year by the ESB. The ESB Council will select the projects. Selected graduate students will be awarded 1,500 euros for covering a part of their mobility cost.

Where do placements take place?: Host organisations for student placements may be, training and research centres, companies, in the field of biomaterials, tissue engineering and regenerative medicine.

Sponsorship for lab exchange: Racquel Z. LeGeros Award



Application

Candidates (must be an ESB member) should provide :

- A Curriculum Vitae
- The Application Form (*one page: objectives of the mobility, added value of the lab exchange...*)
- A supervisor letter from the home laboratory (member of ESB)
- A letter from the host laboratory (member of ESB)

The applicant should be a presenting author of an abstract during the next ESB conference .

Call 2015

- Deadline: 15th November 2014
- Response : 15th December 2014

Contact:

Joelle Amedee-Vilamitjana (joelle.amedee@inserm.fr)

Marc Bohner (marc.bohner@rms-foundation.ch)



JMSMM

Joëlle Amédée-Vilamitjana



Editors:

Serena M. Best, University of Cambridge, UK

Matteo Santin, University of Brighton, UK

Associate Editors:

Joëlle Amédée, Université Bordeaux, France

Francesc Xavier Gil Mur, Universitat Politècnica de Catalunya, Barcelona, Spain

Gabriela Voskerician, Case Western Reserve University, USA

Journal Coordinator:

Christine Carey, University of Cambridge, UK



Publisher's Report

Total submissions for 2013 were 894 (976 in 2012), 30 % being accepted.

China: 20%. India, 3 %. USA 8 %. Europe: >20%

The Impact Factor has significantly progressed from 2.14 in 2012 to **2.379 in 2013**

New features in 2014

- Rapid Communications
- Clinically Focused Translational Research Section
- Young Investigator-Mentor Program to Foster Development of Scientific Review Skills

Editor's Report 2013



Best Paper Award 2013

J Mater Sci: Mater Med (2013) 24:2371–2379
DOI 10.1007/s10856-013-4993-3

Transferrin-conjugated, fluorescein-loaded magnetic nanoparticles for targeted delivery across the blood–brain barrier

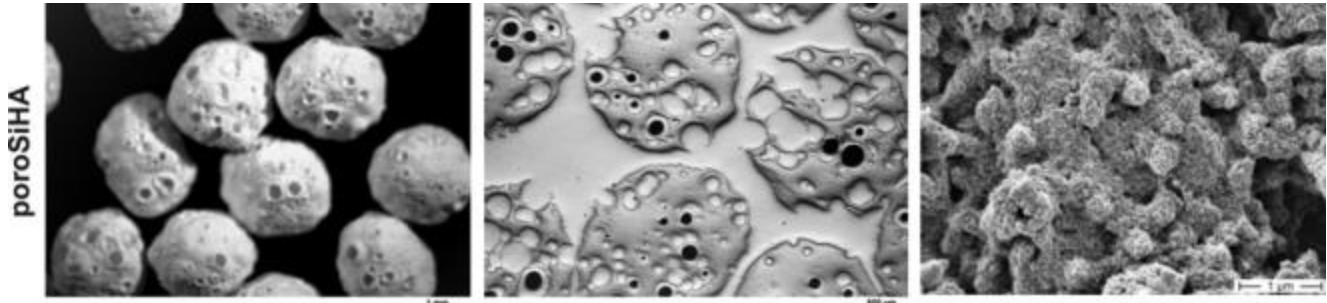
Feng Yan · Ying Wang · Shenzhi He ·
Shuting Ku · Wei Gu · Ling Ye

Best Micrograph Award 2013

J Mater Sci: Mater Med (2013) 24:1755–1766
DOI 10.1007/s10856-013-4933-2

Nanocrystalline spherical hydroxyapatite granules for bone repair: in vitro evaluation with osteoblast-like cells and osteoclasts

A. Bernhardt · R. Dittrich · A. Lode ·
F. Despang · M. Gelinsky





Any other business (A.O.B)

Matteo Santin / All

ESB 2014

it's liverpool



Thank you for your attention!

